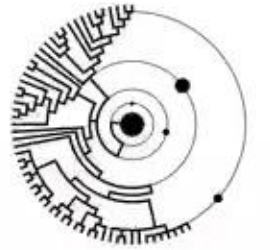




ASTROBIOLOGY at NASA
LIFE IN THE UNIVERSE



SAGANet.org

THE NASA 'ASK AN ASTROBIOLOGIST' SHOW

AN AVENUE FOR SCIENCE COMMUNICATION

Mariam Naseem

mariam@bmsis.org

1
00:00:04,150 --> 00:00:02,389
hi my name is miriam nasim and i am part

2
00:00:06,230 --> 00:00:04,160
of the production team for the ask an

3
00:00:07,430 --> 00:00:06,240
astrobiologist so as a visiting scholar

4
00:00:09,190 --> 00:00:07,440
at blue marble

5
00:00:11,350 --> 00:00:09,200
so this is a monthly live stream show

6
00:00:12,470 --> 00:00:11,360
where we bring on an astrobiologist

7
00:00:14,310 --> 00:00:12,480
scientist to talk about their

8
00:00:16,550 --> 00:00:14,320
professional journey their research and

9
00:00:17,990 --> 00:00:16,560
engage in a q a with the audience

10
00:00:19,510 --> 00:00:18,000
and today we're presenting the guest

11
00:00:21,510 --> 00:00:19,520
demographics and we encourage your

12
00:00:23,269 --> 00:00:21,520
feedback on how to improve this show

13
00:00:25,029 --> 00:00:23,279

so in terms of demographics looking at

14

00:00:27,029 --> 00:00:25,039

youtube episodes we've had around

15

00:00:28,150 --> 00:00:27,039

over 40 episodes and most of the guests

16

00:00:29,830 --> 00:00:28,160

were from academia

17

00:00:31,509 --> 00:00:29,840

when we look at just nasa affiliation

18

00:00:33,030 --> 00:00:31,519

most of them are from government looking

19

00:00:35,430 --> 00:00:33,040

at external affiliation

20

00:00:36,389 --> 00:00:35,440

again most of them are from academia

21

00:00:38,389 --> 00:00:36,399

looking at

22

00:00:40,389 --> 00:00:38,399

the primary discipline a majority of

23

00:00:42,069 --> 00:00:40,399

guests come from geosciences followed by

24

00:00:44,630 --> 00:00:42,079

astronomy and astrophysics and then

25

00:00:47,590 --> 00:00:44,640

planetary sciences in terms of

26

00:00:49,350 --> 00:00:47,600

their subfield related to astrobiology

27

00:00:51,430 --> 00:00:49,360

they mostly do research on origins of

28

00:00:53,910 --> 00:00:51,440

life followed by habitable environments

29

00:00:55,750 --> 00:00:53,920

most of them in terms of viewership in

30

00:00:58,470 --> 00:00:55,760

the audience we're watching from the us

31

00:00:59,990 --> 00:00:58,480

followed by india we see that there is

32

00:01:01,590 --> 00:01:00,000

opportunity to expand guest

33

00:01:02,549 --> 00:01:01,600

representation beyond government and

34

00:01:04,390 --> 00:01:02,559

academia

35

00:01:06,390 --> 00:01:04,400

and majority of them were scientists we

36

00:01:07,350 --> 00:01:06,400

can bring on more engineers philosophers

37

00:01:09,350 --> 00:01:07,360

artists doing

38

00:01:10,710 --> 00:01:09,360

astrobiology research a lot of the

39

00:01:11,990 --> 00:01:10,720

research that we talked about was

40

00:01:13,750 --> 00:01:12,000

origins of life habitable

41

00:01:15,190 --> 00:01:13,760

environment and exoplanet science we can

42

00:01:16,469 --> 00:01:15,200

expand to other themes

43

00:01:18,390 --> 00:01:16,479

we want to continue our strong

44

00:01:19,910 --> 00:01:18,400

viewership trend and audience engagement

45

00:01:22,310 --> 00:01:19,920

we would love to hear your feedback